
FreeBSD

Korea FreeBSD Users Group – <http://www.kr.FreeBSD.org/>

Chapter 12 : FreeBSD

<rick@rickinc.com> .

<nobreak@kr.FreeBSD.org> .

: 2004 8 7

: 2005 3 8

: 1.0

FreeBSD Documentation Project FreeBSD Handbook 2004 8

7 . FreeBSD Handbook ,
, CVS Repository
,
,
가
가 . KFUG(Korea FreeBSD Users Group)
KFUG

“FreeBSD Handbook” “FreeBSD Documentation Project” , “ FreeBSD
” “ (Young-oak Lee)” .

Copyright © 1995, 1996, 1997, 1998, 1999, 2000, 2001, 2002, 2003, 2004 The FreeBSD Documentation Project.

12 FreeBSD

12.1

“ ” . FreeBSD
가 .
FreeBSD
FreeBSD init(8)가
:

- FreeBSD 가
- FreeBSD
- device.hints(5)

x86: x86 FreeBSD

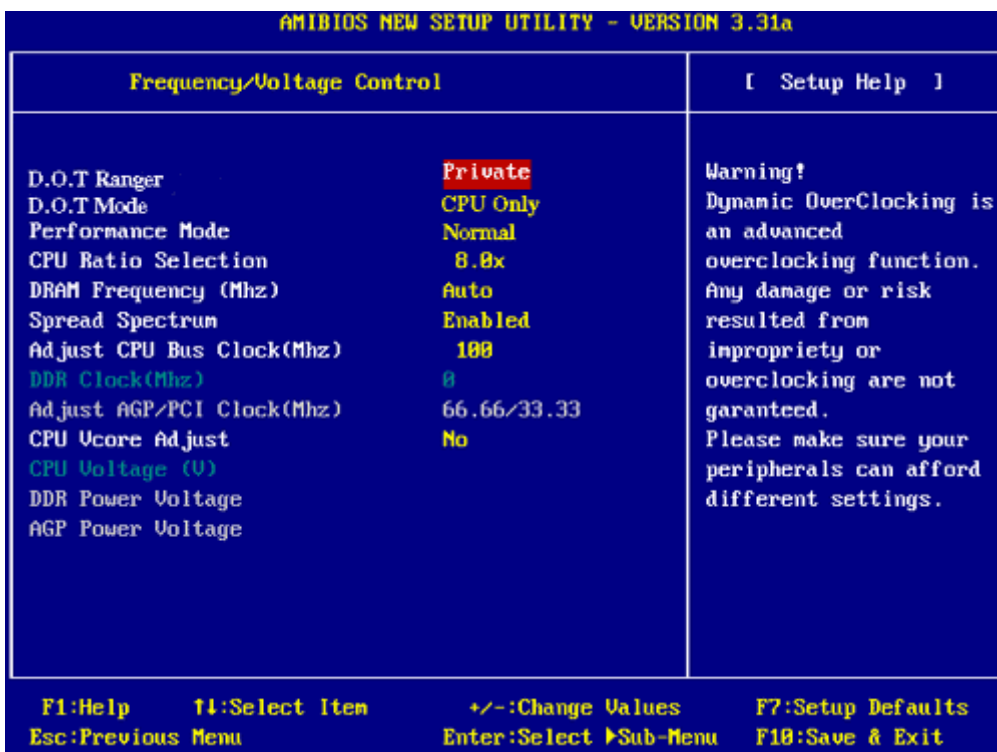
12.2

가 .
가 .
, 가 가?

Adventures of Baron Munchausen

“ ” 가
 x86 / (BIOS) 가
 BIOS (MBR)
 . BIOS MBR 가
 MBR

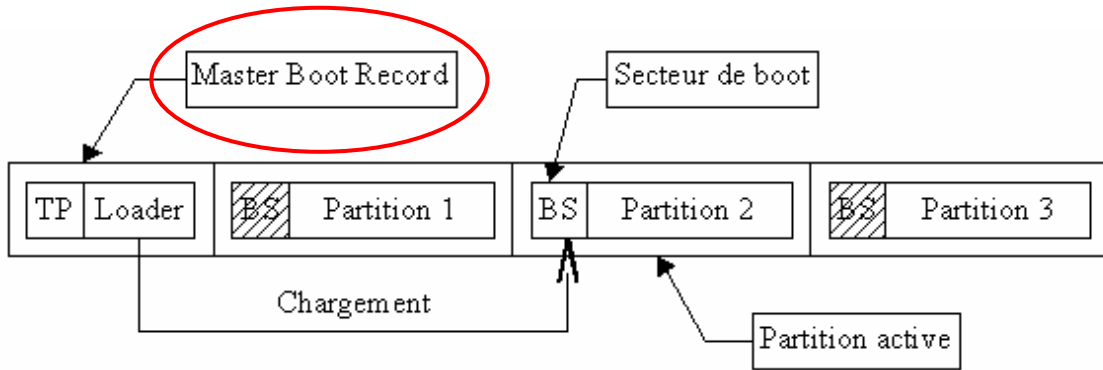
PC BIOS



[12-1.bmp]

MBR . MBR

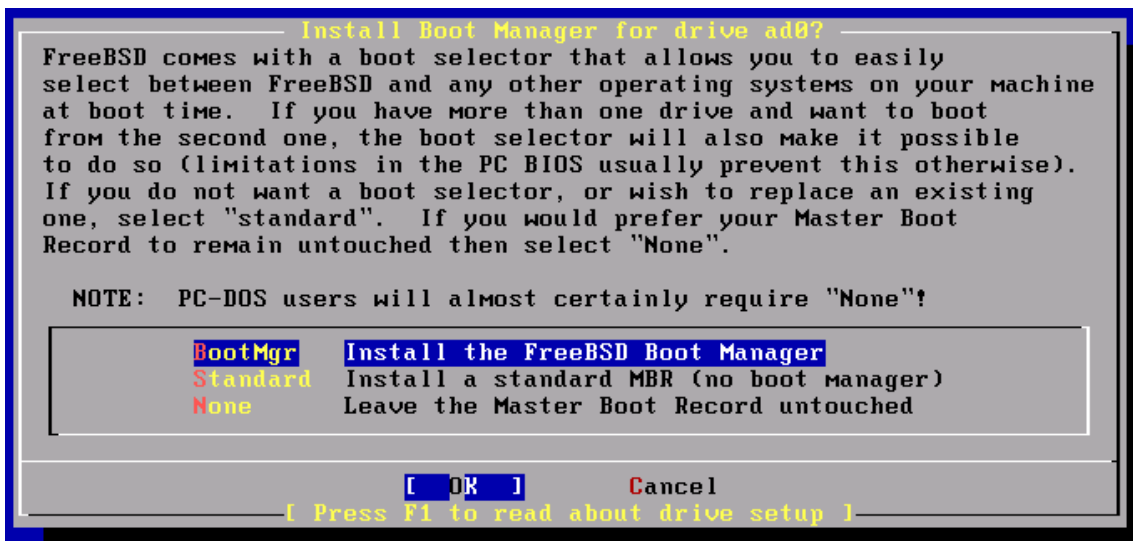
DISK MBR



[12-2.bmp]

가 MBR . FreeBSD MBR
가 MBR .

FreeBSD Boot Manager



FreeBSD

MBR

PC 1 2

. FreeBSD

가
init(8)
init(8)
init(8)
FreeBSD

12.3 MBR 1, 2, 3

12.3.1 MBR, /boot/boot0

FreeBSD MBR /boot/boot0 MBR FreeBSD
MBR
boot0 MBR 512 boot0
FreeBSD MBR

12-1. boot0

F1 DOS
F2 FreeBSD
F3 Linux
F4 ??
F5 Drive 1
Default: F2

95, 98 MBR
MBR FreeBSD MBR

fdisk -B -b /boot/boot0 *device*

device ad0 IDE , ad2 IDE ,
da0 SCSI .

LILO 가

/etc/lilo.conf FreeBSD FreeBSD Leave
The Master Boot Record Untouched . FreeBSD
LILO /etc/lilo.conf 가 :

```
other=/dev/hdXY
table=/dev/hdb
loader=/boot/chain.b
label=FreeBSD
```

LILO FreeBSD .
XY . SCSI /dev/hdXY
XY /dev/sdXY
가 loader=/boot/chain.b
/sbin/lilo -v

12.3.2 1: /boot/boo1 2: /boot/boot2

boot0 MBR
/boot
FreeBSD
boot1 512 boot1 boot2
가 FreeBSD disklabel
boot2 FreeBSD

12-2. boot2

```
>> FreeBSD/i386 BOOT
Default: 0:ad(0,a)/kernel
boot:
```

```
boot1 boot2 가 disklabel(8) :
```

```
# disklabel -B disklice
```

```
ad0s1 IDE disklice
```

```
Dangerously Dedicated Mode: disklabel(8) ad0
```

```
dangerously dedicated disk
```

```
Return disklabel(8)
```

12.3.3 3: /boot/loader

```
3 /boot/loader
```

12.3.3.1

```
/boot/default/loader.conf
```


load [*-t type*] *filename*

ls [*-l*] [*path*]

가 root

. -l

lsdev [*-v*]

. -v

lsmod [*-v*]

. -v

more *filename*

*LINES*가

reboot

set *variable*, set *variable=value*

unload

12.3.3.3

가 가 :

- 가
:

`boot -s`

- ()
:

`unload`

`load kernel.old`

`kernel.GENERIC`

()
`kernel.old` .

Note:

:

`unload`

`set kernel="kernel.old"`

`boot-conf`

- (boot-time configurator) :

`load -t userconfig_script /boot/kernel.conf`

12.4

() boot2 () 가

12.4.1

가 :

-a

root

-C

CDROM

-c

UserConfig

-v

Note:

boot(8)

12.5

Note:

FreeBSD 5.0

boot loader(8) device.hints(5)

“ ”

가

3

set

가

unset

show

/boot/device.hints

kenv(1)

/boot/device.hints

"#"

:

hint.driver.unit.keyword="value"

3

:

set hint.driver.unit.keyword=value

driver

, unit

keyword

:

- *at:* 가
- *port:* I/O
- *irq:*
- *drq:* DMA
- *maddr:* 가
- *flags:*
- *disabled:* 1

가 ()

device.hints(5), kenv(1), loader.conf(5)

loader(8)

12.6.3

init(8)가 가

12.6.3.1 (rc)

/etc/defaults/rc.conf
/etc/rc.conf . /etc/fstab ,
,

rc(8)
가 .

12.7

shutdown(8) init(8) /etc/rc.shutdown
TERM *KILL*

FreeBSD
shutdown -p now . FreeBSD
shutdown -r now . shutdown(8) root operator
halt(8) reboot(8) . halt(8), reboot(8)
shutdonw(8)

Note: FreeBSD 5.X acpi(4) FreeBSD 4.X apm(4)